

# P900 Series

## Industrial Grade Glass Tube Flowmeters



Parker P Series glass tube flowmeters deliver unsurpassed performance and value in a wide variety of gas and liquid flow applications. P900 Series flow meters, available in 35 flow ranges from 6 tube sizes with full horizontal and vertical connection options, are the most versatile industrial glass tube meters available. The powder coated 304 stainless steel case and precision molded polycarbonate shield will tolerate most corrosive applications, and the easily removable flow tube simplifies maintenance and replacement. Designed, manufactured and tested in the US.



### Contact Information:

Parker Hannifin Corporation  
**Porter Instrument Division**  
245 Township Line Road  
Hatfield, PA 19440

phone 215 723 4000  
fax 215 723 2199  
Industrial@parker.com

www.parker.com

### Product Features and Options:

- Available in 35 flow ranges in 6 tube sizes.
- NPT and flanged horizontal or vertical connections available.
- Powder-coated 304 stainless steel case and clear polycarbonate front shield.
- Industry standard dimensions.
- Easily removable in-line glass tube.
- Max temperature: 200°F (93°C) for both 316L SS and PVDF fittings.
- Stable flow capacities up to 85 GPM water and 288 SCFM air.
- Latching reed switch alarm option.
- Certified calibrations conforming to ISA RP 16.6 available.
- Detachable direct reading scales can be produced in any volumetric unit.



ENGINEERING YOUR SUCCESS.

# Specifications

## Materials

<b>Metering Tube</b>	Borosilicate Glass
<b>Internal Components</b>	<b>Standard:</b> 316L Stainless Steel <b>Optional:</b> Hastelloy® C-276
<b>Inlet/Outlet Fittings</b>	FNPT or Flange, Vertical or Horizontal
<b>Fitting Material</b>	<b>Standard:</b> 316L Stainless Steel <b>Optional:</b> PVDF (FNPT Only)
<b>Elastomers</b>	<b>Standard:</b> Viton® <b>Optional:</b> Buna, EPR, and Kalrez®
<b>Case</b>	Powder-Coated 304 Stainless Steel
<b>Cover</b>	Molded Polycarbonate Shield

Hastelloy® is a registered trademark of Haynes International, Inc.  
Viton® and Kalrez® are registered trademarks of DuPont Performance Elastomers L.L.C.

## Options

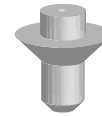
<b>Alarm</b>	Latching Reed Switch
<b>Valve</b>	External Valve – 316L Stainless Steel (Size 3 to Size 6 FNPT only)
<b>Certified Calibrations</b>	Conform to ISA RP 16.6
<b>Scales</b>	Can be produced in any volumetric unit

## Performance

<b>Capacities</b>	Water 0.27 to 85 GPM Air 1.15 to 288 SCFM
<b>Scale</b>	Sizes 3 to 6 250 mm (10") Sizes 8 to 9 200 mm (8") Direct reading, detachable (Dual scales available upon request)
<b>Accuracy</b>	±2% of Full Scale Flow
<b>Turndown</b>	10:1 unless otherwise indicated
<b>Repeatability</b>	1/2%
<b>Maximum Temperatures</b>	316L SS Fittings 200°F (93°C) PVDF Fittings 200°F (93°C)
<b>Maximum Pressures</b>	316L SS Fittings 300 psig, sizes 3 & 4 316L SS Fittings 250 psig, sizes 5 & 6 316L SS Fittings 150 psig, sizes 8 & 9 PVDF Fittings 150 psig, all sizes
<b>Ambient Temperature</b>	33°F to 125°F (1°C to 52°C)

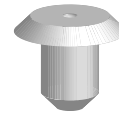
## Float Types

**GS**



Semi Viscosity  
Compensation

**GV**



Maximum Viscosity  
Compensation

**LJ**



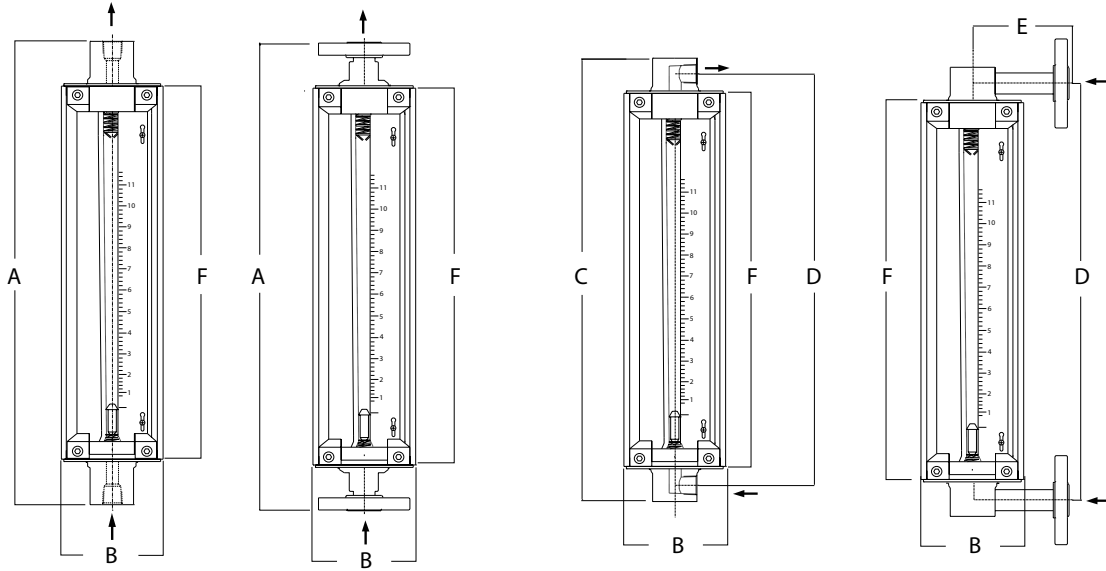
Minimum Viscosity  
Compensation

**BL**



No Viscosity  
Compensation

## Flow Ranges and Dimensions



Order #	Full Scale Flow GPM – Water	Order #	Full Scale Flow SCFM – Air	Float #	Float Type	Alarm Option	Press. Drop in WC	Dimensions (Inches)						Connection Size (Inches)	
								A	B	C	D	E	F	FNPT	Flange
31W	0.27	31A	1.15	3-BLG-01	BL	No	4	19.7	4.13	18.86	17.5	3.94	16.1	1/2	1/2
32W	0.49	32A	2.1	3-BLG-02	BL	No	4	19.7	4.13	18.86	17.5	3.94	16.1	1/2	1/2
33W	0.64	33A	2.64	3-HFG-01	HF	Yes	4	19.7	4.13	18.86	17.5	3.94	16.1	1/2	1/2
34W	0.77	34A	3.2	3-LJG-01	LJ	Yes	4	19.7	4.13	18.86	17.5	3.94	16.1	1/2	1/2
41W	1.1	41A	4.2	4-GVG-01	GV	Yes	6	19.7	4.13	18.86	17.5	3.94	16.1	1/2	1/2
42W	1.3	42A	5.5	4-GSG-01	GS	Yes	6	19.7	4.13	18.86	17.5	3.94	16.1	1/2	1/2
43W	1.5	43A	6.2	4-GVG-02	GV	Yes	8	19.7	4.13	18.86	17.5	3.94	16.1	1/2	1/2
44W	1.8	44A	7.6	4-GSG-02	GS	Yes	9	19.7	4.13	18.86	17.5	3.94	16.1	1/2	1/2
45W	2.2	45A	9	4-GSG-03	GS	Yes	15	19.7	4.13	18.86	17.5	3.94	16.1	1/2	1/2
46W	2.5	46A	10.2	4-GSG-03	GS	Yes	19	19.7	4.13	18.86	17.5	3.94	16.1	1/2	1/2
47W	3.4	47A	14	4-GSG-04	GS	Yes	27	19.7	4.13	18.86	17.5	3.94	16.1	1/2	1/2
51W	2.5	51A	10	5-GVG-01	GV	Yes	6	19.7	4.13	18.86	17.5	4.72	16.1	3/4	1
52W	3	52A	12	5-GSG-01	GS	Yes	6	19.7	4.13	18.86	17.5	4.72	16.1	3/4	1
53W	3.5	53A	14.4	5-GSG-02	GS	Yes	10	19.7	4.13	18.86	17.5	4.72	16.1	3/4	1
54W	4	54A	16.4	5-GVG-02	GV	Yes	15	19.7	4.13	18.86	17.5	4.72	16.1	3/4	1
55W	5	55A	20	5-LJG-01	LJ	Yes	41	19.7	4.13	18.86	17.5	4.72	16.1	3/4	1
61W	6.5	61A	26.8	6-GSG-01	GS	Yes	13	19.7	4.13	18.86	17.5	4.72	16.1	3/4	1
62W	7	62A	28.8	6-GVG-01	GV	Yes	20	19.7	4.13	18.86	17.5	4.72	16.1	3/4	1
63W	8.2	63A	34	6-GSG-02	GS	Yes	27	19.7	4.13	18.86	17.5	4.72	16.1	3/4	1
64W	10.5	64A	44	6-GVG-02	GV	Yes	30	19.7	4.13	18.86	17.5	4.72	16.1	3/4	1
65W	13	65A	54	6-GSG-03	GS	Yes	32	19.7	4.13	18.86	17.5	4.72	16.1	3/4	1
66W	16	66A	66	6-GVG-03	GV	Yes	48	19.7	4.13	18.86	17.5	4.72	16.1	3/4	1
67W	20	67A	82	6-HFG-01	HF	Yes	97	19.7	4.13	18.86	17.5	4.72	16.1	3/4	1
81W	15	81A	61	8-GVG-01	GV	Yes	8	19.7	5.75	23.26	20.5	5.12	16.3	1 1/2	1 1/2
82W	20	82A	82	8-GVG-02	GV	Yes	13	19.7	5.75	23.26	20.5	5.12	16.3	1 1/2	1 1/2
83W	25	83A	103	8-GVG-03	GV	Yes	22	19.7	5.75	23.26	20.5	5.12	16.3	1 1/2	1 1/2
84W	28	84A	122	8-GSG-01	GS	Yes	30	19.7	5.75	23.26	20.5	5.12	16.3	1 1/2	1 1/2
85W	32	85A	145	8-GSG-02	GS	Yes	24	19.7	5.75	23.26	20.5	5.12	16.3	1 1/2	1 1/2
86W	36	86A	155	8-HFG-01	HF	Yes	43	19.7	5.75	23.26	20.5	5.12	16.3	1 1/2	1 1/2
91W	41	91A	165	9-GVG-01	GV	Yes	28	19.7	5.75	23.26	20.5	5.12	16.3	1 1/2	1 1/2
92W	50	92A	195	9-GVG-02	GV	Yes	44	19.7	5.75	23.26	20.5	5.12	16.3	1 1/2	1 1/2
93W	60	93A	245	9-GSG-01	GS	Yes	36	19.7	5.75	23.26	20.5	5.12	16.3	1 1/2	1 1/2
94W	70	94A	285	9-HFG-01	HF	Yes	62	19.7	5.75	23.26	20.5	5.12	16.3	1 1/2	1 1/2
95W	85	-	-	9-LJG-01	LJ	Yes	88	19.7	5.75	23.26	20.5	5.12	16.3	1 1/2	1 1/2

# Ordering Information

Use the following guide to determine the specific product number you require.

The following example describes a P900 flowmeter with 150# stainless steel vertical flanges, 316 stainless steel float, EPR O-rings, 3.4 GPM water flow rate and an alarm option.

**Example: P90032147W1**

Meter Series	Fitting Type and Fitting Material	Float Material	O-Ring Material	Order Number	Alarm Option
<b>P900</b>	<b>3</b>	<b>2</b>	<b>1</b>	<b>47W</b>	<b>1</b>
<b>P900</b>	<b>1</b> Vertical FNPT 316L Stainless Steel <b>2</b> Horizontal FNPT 316L Stainless Steel <b>3</b> Vertical Flange 316L Stainless Steel – 150# <b>4</b> Horizontal Flange 316L Stainless Steel – 150# <b>5</b> Vertical Flange 316L Stainless Steel – 300# <b>6</b> Horizontal Flange 316L Stainless Steel – 300# <b>7</b> Vertical FNPT PVDF <b>8</b> Horizontal FNPT PVDF	<b>2</b> 316 Stainless Steel <b>4</b> Hastelloy® C-276	<b>1</b> Ethylene Propylene Rubber <b>2</b> Buna <b>3</b> Viton® <b>4</b> Kalrez®	See Flow Ranges and Dimensions Table	See Flow Ranges and Dimensions Table for Availability  <b>0</b> No Alarm <b>1</b> With Alarm

Hastelloy® is a registered trademark of Haynes International, Inc.  
 Viton® and Kalrez® are registered trademarks of DuPont Performance Elastomers L.L.C.

### ⚠ WARNING – USER RESPONSIBILITY

**FAILURE OR IMPROPER SELECTION OR IMPROPER USE OF THE PRODUCTS DESCRIBED HEREIN OR RELATED ITEMS CAN CAUSE DEATH, PERSONAL INJURY AND PROPERTY DAMAGE.**

This document and other information from Parker-Hannifin Corporation, its subsidiaries and authorized distributors provide product or system options for further investigation by users having technical expertise.

The user, through its own analysis and testing, is solely responsible for making the final selection of the system and components and assuring that all performance, endurance, maintenance, safety and warning requirements of the application are met. The user must analyze all aspects of the application, follow applicable industry standards, and follow the information concerning the product in the current product catalog and in any other materials provided from Parker or its subsidiaries or authorized distributors.

To the extent that Parker or its subsidiaries or authorized distributors provide component or system options based upon data or specifications provided by the user, the user is responsible for determining that such data and specifications are suitable and sufficient for all applications and reasonably foreseeable uses of the components or systems.

### Offer of Sale

The items described in this document are hereby offered for sale by Parker-Hannifin Corporation, its subsidiaries or its authorized distributors. This offer and its acceptance are governed by the provisions stated in the detailed "Offer of Sale" elsewhere in this document or available at [www.parker.com/safety](http://www.parker.com/safety).

# P310 Series

## Glass Tube Variable Area Flowmeter



The P310 Series Flowmeters are an economical stainless steel meter with a molded Polysulfone metering tube for lighter duty applications where a case enclosed meter is preferred.

Combined with alarms and high accuracy, the P310 series is an excellent solution for demanding process applications.



### Contact Information: Product Features:

Parker Hannifin Corporation  
**Porter Instrument Division**  
245 Township Line Road  
Hatfield PA, 19440

**Phone 215 723 4000**  
**Fax 215 723 2199**  
**industrial@parker.com**

[www.porterinstrument.com](http://www.porterinstrument.com)

- Polysulfone tube
- 304 Stainless Steel Case
- Scales can be produced in any volumetric unit.
- Alarm output is available as an option.
- 127 mm tube

# Specification

## Materials

<b>Metering Tube</b>	Molded Polysulfone
<b>Internal Components</b>	Standard: 316L Stainless Steel, Teflon, Polysulfone or Hastelloy® C-276
<b>Inlet/Outlet Fittings</b>	FNPT, Vertical
<b>Fitting Material</b>	Standard: 316L Stainless Steel Optional: PVC
<b>Elastomers</b>	Standard: Viton® Optional: Buna N, EPR, and Kalrez®
<b>Case and Covers</b>	304 Stainless Steel

Viton® and Kalrez® are registered trademarks of DuPont Performance Elastomers L.L.C.

## Performance

<b>Capacities</b>	Water ( Teflon ® float) 0.5 to 100 GPM Water (Metal float) 1.5 to 150 GPM Air 4 to 330 SCFM
<b>Scale</b>	127 mm (5") Direct reading, detachable
<b>Accuracy</b>	±3% of Full Scale Flow ±5% of Full Scale (120 & 150 GPM Metal Floats) ±6% of Full Scale (Teflon® floats)
<b>Turndown</b>	10:1 to 12.5:1, unless otherwise indicated
<b>Repeatability</b>	1/2% 1% (120 & 150 GPM Metal float) 1% (Teflon® floats)
<b>Maximum Temperatures</b>	316L SS Fittings- 200°F (93°C) PVC Fittings- 130°F (54°C)
<b>Maximum Pressures</b>	316L SS Fittings- 200 psig PVC Fittings-150 psig (sizes 41W to 72W) PVC Fittings-125 psig (size 90W to 103W)
<b>Ambient Temperature</b>	33°F to 125°F (1°C to 52°C)

## Options

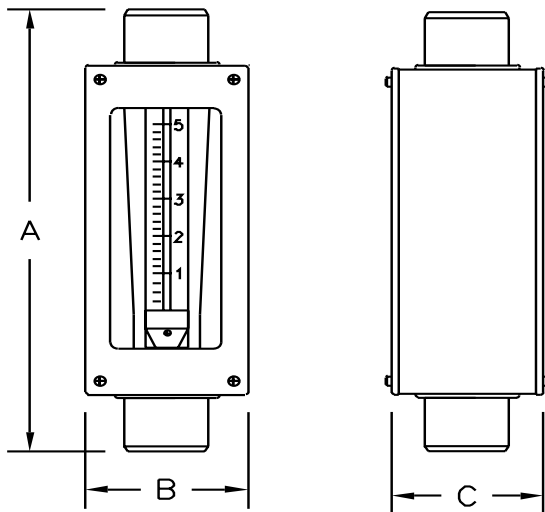
<b>Alarm</b>	Latching Reed Switch
<b>Certified Calibrations</b>	Conform to ISA RP 16.6
<b>Scales</b>	Can be produced in any volumetric unit

# Dimensional Drawing

For Dimensions Refer to Page 3

FRONT VIEW

SIDE VIEW



## Reed Switch Specification

<b>Switch Type</b>	SPDT Latching
<b>Maximum Contact Voltage</b>	100 Vdc
<b>Maximum Contact Current</b>	0.2 A
<b>Maximum Contact Power</b>	4 W
<b>Breakdown Voltage</b>	200 Vdc

# Flow Capacities and Dimensions

Order #	Flow Range Water	Float Material	Float #	Alarm Option	Dimensions (Inches)			Connection Size (Inches)
					A	B	C	
41W	.5 GPM	PVDF	4-TSL-01	no	12.875	4.625	4.50	1/2" FNPT
42W	1 GPM	Teflon®	4-TSL-02	yes	12.875	4.625	4.50	1/2" FNPT
43W	1.5 GPM	316L SS	4-SSL-01	yes	12.875	4.625	4.50	1/2" FNPT
44W	3 GPM	316L SS	4-SSL-02	yes	12.875	4.625	4.50	1/2" FNPT
45W	1.6 GPM	Hastelloy®	4-HSL-01	yes	12.875	4.625	4.50	1/2" FNPT
46W	3.2 GPM	Hastelloy®	4-HSL-02	yes	12.875	4.625	4.50	1/2" FNPT
51W	2.4 GPM	Teflon®	5-TSL-01	yes	12.875	4.625	4.50	3/4" FNPT
52W	5 GPM	Teflon®	5-TSL-02	yes	12.875	4.625	4.50	3/4" FNPT
53W	6 GPM	316L SS	5-SSL-01	yes	12.875	4.625	4.50	3/4" FNPT
54W	10 GPM	316L SS	5-SSL-02	yes	12.875	4.625	4.50	3/4" FNPT
55W	6.3 GPM	Hastelloy®	5-HSL-01	yes	12.875	4.625	4.50	3/4" FNPT
56W	10.6 GPM	Hastelloy®	5-HSL-02	yes	12.875	4.625	4.50	3/4" FNPT
61W	7.6 GPM	Teflon®	6-TSL-01	yes	12.875	4.625	4.50	1" FNPT
62W	10 GPM	Teflon®	6-TSL-02	yes	12.875	4.625	4.50	1" FNPT
63W	15 GPM	Teflon®	6-TSL-03	yes	12.875	4.625	4.50	1" FNPT
64W	20 GPM	Teflon®	6-TSL-04	yes	12.875	4.625	4.50	1" FNPT
65W	12 GPM	316L SS	6-GVL-01	yes	12.875	4.625	4.50	1" FNPT
66W	18 GPM	316L SS	6-SSL-02	yes	12.875	4.625	4.50	1" FNPT
67W	25 GPM	316L SS	6-SSL-03	yes	12.875	4.625	4.50	1" FNPT
68W	35 GPM	316L SS	6-SSL-04	yes	12.875	4.625	4.50	1" FNPT
69W	13 GPM	Hastelloy®	6-HSL-01	yes	12.875	4.625	4.50	1" FNPT
70W	19 GPM	Hastelloy®	6-HSL-02	yes	12.875	4.625	4.50	1" FNPT
71W	26.5 GPM	Hastelloy®	6-HSL-03	yes	12.875	4.625	4.50	1" FNPT
72W	37 GPM	Hastelloy®	6-HSL-04	yes	12.875	4.625	4.50	1" FNPT
90W	40 GPM	Teflon®	9-TSL-00	yes	16.000	6.250	6.25	2" FNPT
91W	60 GPM	Teflon®	9-TSL-01	yes	16.000	6.250	6.25	2" FNPT
92W	80 GPM	Teflon®	9-TSL-02	yes	16.000	6.250	6.25	2" FNPT
94W	100 GPM	Teflon®	9-TSL-04	yes	16.000	6.250	6.25	2" FNPT
99W	60 GPM	316L SS	9-SSL-00	yes	16.000	6.250	6.25	2" FNPT
95W	80 GPM	316L SS	9-SSL-01	yes	16.000	6.250	6.25	2" FNPT
96W	100 GPM	316L SS	9-SSL-02	yes	16.000	6.250	6.25	2" FNPT
97W	120 GPM	316L SS	9-SSL-03	yes	16.000	6.250	6.25	2" FNPT
98W	150 GPM	316L SS	9-SSL-04	yes	16.000	6.250	6.25	2" FNPT
100W	84 GPM	Hastelloy®	9-HSL-01	yes	16.000	6.250	6.25	2" FNPT
101W	106 GPM	Hastelloy®	9-HSL-02	yes	16.000	6.250	6.25	2" FNPT
102W	126 GPM	Hastelloy®	9-HSL-03	yes	16.000	6.250	6.25	2" FNPT
103W	160 GPM	Hastelloy®	9-HSL-04	yes	16.000	6.250	6.25	2" FNPT

Viton® and Kalrez® are registered trademarks of DuPont Performance Elastomers L.L.C.

Order #	Full Range Air	Float Material	Float #	Alarm Option	Dimensions (Inches)			Connection Size (Inches)
					A	B	C	
43A	6.1 SCFM	316L SS	4-SSL-01	yes	12.875	4.625	4.50	1/2" FNPT
44A	12.4 SCFM	316L SS	4-SSL-02	yes	12.875	4.625	4.50	1/2" FNPT
53A	25 SCFM	316L SS	5-SSL-01	no	12.875	4.625	4.50	3/4" FNPT
54A	41 SCFM	316L SS	5-SSL-02	yes	12.875	4.625	4.50	3/4" FNPT
65A	50 SCFM	316L SS	6-GVL-01	yes	12.875	4.625	4.50	1" FNPT
66A	76 SCFM	316L SS	6-SSL-02	yes	12.875	4.625	4.50	1" FNPT
67A	100 SCFM	316L SS	6-SSL-03	yes	12.875	4.625	4.50	1" FNPT
99A	245 SCFM	316L SS	9-SSL-00	yes	16.000	6.250	6.25	2" FNPT
95A	330 SCFM	316L SS	9-SSL-01	yes	16.000	6.250	6.25	2" FNPT

# Ordering Information

Use the following guide to determine the specific product number you require.

The following example describes a P310 flowmeter with stainless steel fittings, 316 stainless steel float, Viton O-rings, 0.5 GPM water flow rate and no alarm option.

**Example: P310-2-2-3-0-41W**

Meter Series	Fitting Material	Float Material	O-Ring Material	Optional Alarm	Order Number
P310	316 SS - 2 PVC* - 3 PVDF* - 7	316L SS - 2 Hastelloy® C-276 - 4 Teflon® - 6 PVDF* - 7	EPR - 1 Buna-N - 2 Viton® - 3 Kalrez® - 4	Without Alarm - 0 One Alarm - A	See Specifications Table

\* Not for air service

Hastelloy® is a registered trademark of Haynes International, Inc.

Viton® and Kalrez® are registered trademarks of DuPont Performance Elastomers L.L.C.

## WARNING - USER RESPONSIBILITY

FAILURE OR IMPROPER SELECTION OR IMPROPER USE OF THE PRODUCTS DESCRIBED HEREIN OR RELATED ITEMS CAN CAUSE DEATH, PERSONAL INJURY AND PROPERTY DAMAGE.

This document and other information from Parker-Hannifin Corporation, its subsidiaries and authorized distributors provide product or system options for further investigation by users having technical expertise.

The user, through its own analysis and testing, is solely responsible for making the final selection of the system and components and assuring that all performance, endurance, maintenance, safety and warning requirements of the application are met. The user must analyze all aspects of the application, follow applicable industry standards, and follow the information concerning the product in the current product catalog and in any other materials provided from Parker or its subsidiaries or authorized distributors.

To the extent that Parker or its subsidiaries or authorized distributors provide component or system options based upon data or specifications provided by the user, the user is responsible for determining that such data and specifications are suitable and sufficient for all applications and reasonably foreseeable uses of the components or systems.

## Offer of Sale

The items described in this document are hereby offered for sale by Parker-Hannifin Corporation, its subsidiaries or its authorized distributors. This offer and its acceptance are governed by the provisions stated in the detailed "Offer of Sale" elsewhere in this document or available at [www.parker.com/offersale](http://www.parker.com/offersale)



# P450 Series

## Glass Tube Variable Area Flowmeter



The P450 Series Flowmeters are designed to extend the flow capacity of a traditional purgemeter given an outstanding performance for a wide range of liquids and gases.

The 316L SS construction allows for usage with many types of corrosive gases and liquids making it optimal for demanding industrial applications.



### Contact Information:

Parker Hannifin Corporation  
**Porter Instrument Division**  
245 Township Line Road  
Hatfield PA, 19440

**Phone 215 723 4000**  
**Fax 215 723 2199**  
**industrial@parker.com**

[www.porterinstrument.com](http://www.porterinstrument.com)

### Product Features:

- Borosilicate Glass tube metering tube
- 304 Stainless Steel Case
- Scales can be produced in any volumetric unit.
- Certified calibrations conforming to ISA RP 16.6 available
- Easy-to-read scale

# Specification

## Materials

<b>Metering Tube</b>	Borosilicate Glass
<b>Internal Components</b>	Standard: 316L Stainless Steel
<b>Inlet/Outlet Fittings</b>	FNPT, Horizontal Control Valve optional
<b>Fitting Material</b>	Standard: Brass or 316L Stainless Steel
<b>Elastomers</b>	Standard: Viton® Optional: Buna N, EPR, and Kalrez®

Hastelloy® is a registered trademark of Haynes International, Inc.  
Viton® and Kalrez® are registered trademarks of DuPont Performance Elastomers L.L.C.

## Options

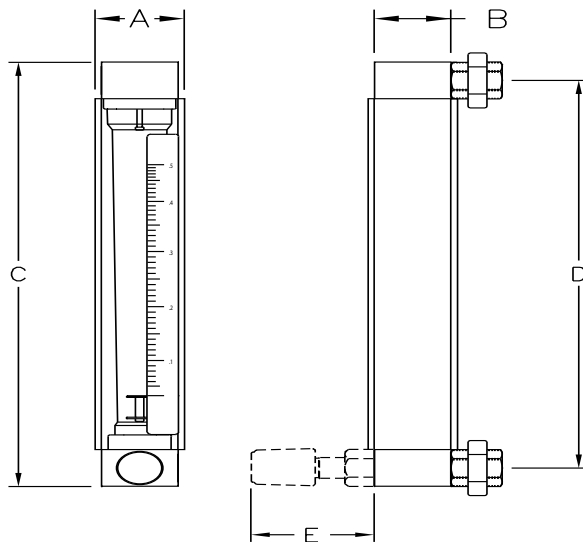
<b>Certified Calibrations</b>	Conform to ISA RP 16.6
<b>Scales</b>	Can be produced in any volumetric unit

## Performance

<b>Capacities</b>	Water 0.48 to 7.4 GPM Air 2 to 20 SCFM
<b>Scale</b>	75 mm (3"), 150 mm (6") Direct reading, detachable
<b>Accuracy</b>	±5% of Full Scale Flow, 75 mm ±3% of Full Scale Flow, 150 mm
<b>Turndown</b>	10:1 to 12.5:1, unless otherwise indicated
<b>Repeatability</b>	1%
<b>Maximum Temperatures</b>	200°F (93°C)
<b>Maximum Pressures</b>	200 psig
<b>Ambient Temperature</b>	33°F to 125°F (1°C to 52°C)

# Dimensional Drawing

For Dimensions Refer to Page 4



# Flow Capacities and Dimensions

75mm Scale Models													
Full Scale Flow													
Order Number	Water		Air		Float	Float	Tube	Tube	Dimensions (Inches)				
	GPM	LPM	SCFM	SLPM	Number	Type	Size	Number	A	B	C	D	E
3G1	.48	1.8	2.0	56	1/2-LPG-04	LP	.50"	1/2-24-G-3	1.75	1.50	8.0	7.00	2.25
3G2	1.0	3.8	4.0	112	1/2-LPG-05	LP	.50"	1/2-24-G-3	1.75	1.50	8.0	7.00	2.25
3G3	2.0	7.6	8.2	230	1/2-SLG-01	SL	.50"	1/2-24-G-3	1.75	1.50	8.0	7.00	2.25
3P1	2.5	9.4	10.0	280	5/8-GVP-01	GV	.625"	5/8-29-P-3	1.75	1.50	8.0	7.00	2.25
3P2	4.0	15.0	20.0	560	5/8-SLP-01	SL	.625"	5/8-29-P-3	1.75	1.50	8.0	7.00	2.25
3P3	5.6	21.0	---	---	5/8-SLP-02	SL	.625"	5/8-29-P-3	1.75	1.50	8.0	7.00	2.25
3P4	7.4	28.0	---	---	5/8-SLP-03	SL	.625"	5/8-29-P-3	1.75	1.50	8.0	7.00	2.25

150mm Scale Models													
Full Scale Flow													
Order Number	Water		Air		Float	Float	Tube	Tube	Dimensions (Inches)				
	GPM	LPM	SCFM	SLPM	Number	Type	Size	Number	A	B	C	D	E
6G1	0.5	1.9	2.0	57	1/2-LPG-04	LP	.50"	1/2-24-G-6	1.75	1.50	11.56	10.56	2.25
6G2	1.0	3.8	4.2	118	1/2-LPG-05	LP	.50"	1/2-24-G-6	1.75	1.50	11.56	10.56	2.25
6G3	2.0	7.6	8.2	230	1/2-SLG-01	SL	.50"	1/2-24-G-6	1.75	1.50	11.56	10.56	2.25
6P1	2.5	9.4	10.0	280	5/8-GVP-02	GV	.625"	5/8-32-P-6	1.75	1.50	11.56	10.56	2.25
6P2	4.0	15.0	20.0	560	5/8-SLP-04	SL	.625"	5/8-32-P-6	1.75	1.50	11.56	10.56	2.25
6P3	5.6	21.0	---	---	5/8-SLP-05	SL	.625"	5/8-32-P-6	1.75	1.50	11.56	10.56	2.25
6P4	7.4	28.0	---	---	5/8-SLP-06	SL	.625"	5/8-32-P-6	1.75	1.50	11.56	10.56	2.25

# Ordering Information

Use the following guide to determine the specific product number you require.

The following example describes a P450 flowmeter with stainless steel fittings, 316 stainless steel float, Viton O-rings, 0.48 GPM water flow rate and 316L SS Valve on inlet.

**Example: P450-3G1-2-3-2-4**

Meter Series	Order Number	Fitting Material	O-Ring Material	Scale	Valve Option
P450	See specifications Table	Brass - 1 316LSS - 2	EPR - 1 Buna-N - 2 Viton® - 3 Kalrez® with No Valve - 4 Kalrez® with Valve - 5	Milimeter - 1 GPM Water @ 70 ° F - 2 LPM Water @ 70 ° F - 3 SCFM Air @ STP - 4 SLPM Air @ STP - 5 Non standard - 6	Brass-Inlet - 1 Brass- Outlet - 2 No Valve - 3 316L SS- Inlet - 4 316L SS- Outlet - 5

Hastelloy® is a registered trademark of Haynes International, Inc.  
Viton® and Kalrez® are registered trademarks of DuPont Performance Elastomers L.L.C.

### WARNING – USER RESPONSIBILITY

FAILURE OR IMPROPER SELECTION OR IMPROPER USE OF THE PRODUCTS DESCRIBED HEREIN OR RELATED ITEMS CAN CAUSE DEATH, PERSONAL INJURY AND PROPERTY DAMAGE.

This document and other information from Parker-Hannifin Corporation, its subsidiaries and authorized distributors provide product or system options for further investigation by users having technical expertise.

The user, through its own analysis and testing, is solely responsible for making the final selection of the system and components and assuring that all performance, endurance, maintenance, safety and warning requirements of the application are met. The user must analyze all aspects of the application, follow applicable industry standards, and follow the information concerning the product in the current product catalog and in any other materials provided from Parker or its subsidiaries or authorized distributors.

To the extent that Parker or its subsidiaries or authorized distributors provide component or system options based upon data or specifications provided by the user, the user is responsible for determining that such data and specifications are suitable and sufficient for all applications and reasonably foreseeable uses of the components or systems.

### Offer of Sale

The items described in this document are hereby offered for sale by Parker-Hannifin Corporation, its subsidiaries or its authorized distributors. This offer and its acceptance are governed by the provisions stated in the detailed "Offer of Sale" elsewhere in this document or available at [www.parker.com/offersale](http://www.parker.com/offersale)

# P459 Series

## Glass Tube Variable Area Flowmeter



The P459 Series Flowmeters are characterized by a large tapered tube made of heat-resistant glass, making a wide flow range possible.

Due to its high reliability and easy handling capability, the P459 is suitable for measurement of flow rates of liquids and gases and many different types of applications.



### Contact Information:

Parker Hannifin Corporation  
**Porter Instrument Division**  
245 Township Line Road  
Hatfield PA, 19440

**Phone 215 723 4000**  
**Fax 215 723 2199**  
**industrial@parker.com**

[www.porterinstrument.com](http://www.porterinstrument.com)

### Product Features:

- Borosilicate Glass tube
- 304 Stainless Steel Case
- Scales can be produced in any volumetric unit.
- Standard accuracy,  $\pm 2\%$  of Full Scale Flow
- 250 mm (10") detachable scales

# Specification

## Materials

<b>Metering Tube</b>	Borosilicate Glass
<b>Internal Components</b>	Standard: 316L Stainless Steel
<b>Inlet/Outlet Fittings</b>	NPT, Vertical Connection: Sizes 3 & 4: 1/2" FNPT Size 5: 3/4" FNPT Size 6: 1" FNPT Sizes 8 & 9: 1 1/2" FNPT
<b>Fitting Material</b>	Standard: 316L Stainless Steel
<b>Elastomers</b>	Standard: Viton® Optional: Buna N, EPR, and Kalrez®

Viton® and Kalrez® are registered trademarks of DuPont Performance Elastomers LLC.

## Options

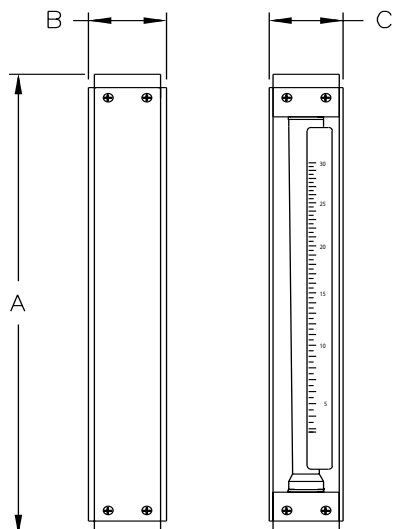
<b>Certified Calibrations</b>	Conform to ISA RP 16.6
<b>Scales</b>	Can be produced in any volumetric unit

## Performance

<b>Capacities</b>	Water: 0.22 to 100 GPM Air: 0.9 to 350 SCFM
<b>Scale</b>	250 mm (10") Direct reading, detachable
<b>Accuracy</b>	±2% of Full Scale Flow
<b>Turndown</b>	10:1 to 12.5:1, unless otherwise indicated
<b>Repeatability</b>	.5%
<b>Maximum Temperatures</b>	200°F (93°C) Liquid 250°F (121°C) Gases
<b>Maximum Pressures</b>	Sizes 3 & 4: 350 psig Size 5: 175 psig Size 6, 8 & 9: 125 psig
<b>Ambient Temperature</b>	33°F to 125°F (1°C to 52°C)

# Dimensional Drawing

For Dimensions Refer to Page 4



# Flow Capacities and Dimensions

Order #	Full Scale Flow GPM – Water	Order #	Full Scale Flow SCFM – Air	Float #	Float Type	Press. Drop in WC	Tube Size	Tube #	Dimensions (Inches)			Connection Size (Inches)
									A	B	C	
31W	0.220	31A	.9	3/8-LPG-01	LP	---	3/8-20-G-10	3G	17	2.5	2.375	1/2"
32W	0.315	32A	1.4	3/8-SLG-01	SL	2	3/8-20-G-10	3G	17	2.5	2.375	1/2"
33W	0.640	33A	2.7	3/8-SLG-02	SL	7	3/8-20-G-10	3G	17	2.5	2.375	1/2"
41W	0.77	41A	3.4	1/2-LPG-01	LP	6	1/2-32-G-10	4G	17	2.5	2.375	1/2"
42W	1.02	42A	4.4	1/2-LPG-02	LPG	10	1/2-32-G-10	4G	17	2.5	2.375	1/2"
43W	1.20	43A	5.0	1/2-GVG-01	GV	0	1/2-32-G-10	4G	17	2.5	2.375	1/2"
44W	1.44	44A	6.1	1/2-GSG-01	GS	15	1/2-32-G-10	4G	17	2.5	2.375	1/2"
45W	1.92	45A	8.5	1/2-SLG-01	SL	28	1/2-32-G-10	4G	17	2.5	2.375	1/2"
46W	2.26	46A	10.2	1/2-SLG-02	SL	41	1/2-32-G-10	4G	17	2.5	2.375	1/2"
51W	1.1	51A	4.5	3/4-LPG-01	LP	1	3/4-28-G-10	5G	17	2.5	2.375	3/4"
52W	2.4	52A	10.0	3/4-GVG-01	GV	4	3/4-28-G-10	5G	17	2.5	2.375	3/4"
53W	3.0	53A	12.0	3/4-GSG-01	GS	5	3/4-28-G-10	5G	17	2.5	2.375	3/4"
54W	3.3	54A	13.2	3/4-GVG-02	GV	6	3/4-28-G-10	5G	17	2.5	2.375	3/4"
55W	4.0	55A	16.4	3/4-GSG-02	GS	6	3/4-28-G-10	5G	17	2.5	2.375	3/4"
56W	5.2	56A	22.0	3/4-SLG-01	SL	18	3/4-28-G-10	5G	17	2.5	2.375	3/4"
61W	6.9	---	---	1-LPG-02	LP	4	1-32-G-10	6G	17	2.5	2.375	1"
62W	9.8	---	---	1-SLG-01	SL	8	1-32-G-10	6G	17	2.5	2.375	1"
63W	12.6	---	---	1-SLG-02	SL	13	1-32-G-10	6G	17	2.5	2.375	1"
64W	6.7	64A	27.0	1-LPP-01	LP	4	1-40-P-10	6P	17	2.5	2.375	1"
65W	7.4	65A	30.0	1-GVP-01	GV	6	1-40-P-10	6P	17	2.5	2.375	1"
66W	8.5	66A	35.0	1-GVP-02	GV	8	1-40-P-10	6P	17	2.5	2.375	1"
67W	10.4	67A	42.5	1-GSP-01	GS	10	1-40-P-10	6P	17	2.5	2.375	1"
68W	11.6	68A	46.5	1-GVP-03	GV	15	1-40-P-10	6P	17	2.5	2.375	1"
69W	12.0	69A	50.0	1-GSP-02	GS	14	1-40-P-10	6P	17	2.5	2.375	1"
610W	15.6	610A	63.0	1-GSP-03	GS	24	1-40-P-10	6P	17	2.5	2.375	1"
611W	21.6	611A	100.0	1-SLP-01	SL	61	1-40-P-10	6P	17	2.5	2.375	1"
612W	27.5	---	---	1-SLP-02	SL	85	1-40-P-10	6P	17	2.5	2.375	1"
613W	34.5	---	---	1-SLP-03	SL	110	1-40-P-10	6P	17	2.5	2.375	1"
84W	17.0	84A	70.0	1 1/2-GVP-01	GV	10	8P-1 1/2-32-P-10	8P	19	4.5	4.500	1"
85W	21.2	85A	87.0	1 1/2-GVP-02	GV	13	8P-1 1/2-32-P-10	8P	19	4.5	4.500	1 1/2"
86W	22.2	---	---	1 1/2-GSP-01	GS	14	8P-1 1/2-32-P-10	8P	19	4.5	4.500	1 1/2"
87W	24.8	87A	102.0	1 1/2 GVP-03	GV	18	8P-1 1/2-32-P-10	8P	19	4.5	4.500	1 1/2"
88W	28.5	---	---	1 1/2-GSP-02	GS	20	8P-1 1/2-32-P-10	8P	19	4.5	4.500	1 1/2"
89W	35.0	---	---	1 1/2-GSP-03	GS	24	8P-1 1/2-32-P-10	8P	19	4.5	4.500	1 1/2"
94W	41.5	94A	170.0	2-GVP-01	GV	20	9P-2-30-P-10	9P	19	4.5	4.500	1 1/2"
95W	58.0	95A	240.0	2-GSP-01	GS	25	9P-2-30-P-10	9P	19	4.5	4.500	1 1/2"
96W	65.0	96A	270.0	2-GSP-02	GS	30	9P-2-30-P-10	9P	19	4.5	4.500	1 1/2"
97W	85.0	97A	350.0	2-SLP-00	SL	40	9P-2-30-P-10	9P	19	4.5	4.500	1 1/2"
98W	100.0	---	---	2-SLP-01	SL	50	9P-2-30-P-10	9P	19	4.5	4.500	1 1/2"

# Ordering Information

Use the following guide to determine the specific product number you require.

The following example describes a P459 flowmeter with stainless steel fittings, 316 stainless steel float, Viton O-rings, 0.22 GPM water flow rate.

**Example: P459-31W-2-3-2**

P459	□□□□*	□	□	□
Meter Series	Order Number	Fitting Material	O-Ring Material	Scale
P459	See specifications Table	316L SS - 2	EPR - 1 Buna-N - 2 Viton® - 3 Kalrez® - 4	Millimeter - 1 GPM Water @ 70 ° F - 2 LPM Water @ 70 ° F - 3 SCFM Air @ STP - 4 SLPM Air @ STP - 5 Non standard - 6

\* Only use this box with order number 610W thru 613W. Otherwise leave blank.

Hastelloy® is a registered trademark of Haynes International, Inc.  
Viton® and Kalrez® are registered trademarks of DuPont Performance Elastomers L.L.C.

## ⚠ WARNING – USER RESPONSIBILITY

FAILURE OR IMPROPER SELECTION OR IMPROPER USE OF THE PRODUCTS DESCRIBED HEREIN OR RELATED ITEMS CAN CAUSE DEATH, PERSONAL INJURY AND PROPERTY DAMAGE.

This document and other information from Parker-Hannifin Corporation, its subsidiaries and authorized distributors provide product or system options for further investigation by users having technical expertise.

The user, through its own analysis and testing, is solely responsible for making the final selection of the system and components and assuring that all performance, endurance, maintenance, safety and warning requirements of the application are met. The user must analyze all aspects of the application, follow applicable industry standards, and follow the information concerning the product in the current product catalog and in any other materials provided from Parker or its subsidiaries or authorized distributors.

To the extent that Parker or its subsidiaries or authorized distributors provide component or system options based upon data or specifications provided by the user, the user is responsible for determining that such data and specifications are suitable and sufficient for all applications and reasonably foreseeable uses of the components or systems.

## Offer of Sale

The items described in this document are hereby offered for sale by Parker-Hannifin Corporation, its subsidiaries or its authorized distributors. This offer and its acceptance are governed by the provisions stated in the detailed "Offer of Sale" elsewhere in this document or available at [www.parker.com/offersale](http://www.parker.com/offersale)



# P460 Series

## Glass Tube Variable Area Flowmeter



The P460 Series Flowmeters are characterized by its high reliability and wide flow range capability, making it suitable for measurement of liquids and gases in a wide variety of applications.

With multiple mounting options and connection types the P460 easily mounts into any system.



### Contact Information: Product Features:

Parker Hannifin Corporation  
**Porter Instrument Division**  
245 Township Line Road  
Hatfield PA, 19440

**Phone 215 723 4000**  
**Fax 215 723 2199**  
**industrial@parker.com**

[www.porterinstrument.com](http://www.porterinstrument.com)

- Borosilicate Glass tube
- 304 Stainless Steel Case
- Scales can be produced in any volumetric unit.
- Standard accuracy,  $\pm 5\%$  of Full Scale Flow
- 80 mm detachable scales

# Specification

## Materials

<b>Metering Tube</b>	Borosilicate Glass
<b>Internal Components</b>	Standard: 316L Stainless Steel Optional: Hastelloy® C-276
<b>Inlet/Outlet Fittings</b>	FNPT Vertical
<b>Fitting Material</b>	Standard: 316L Stainless Steel Optional: PVC
<b>Elastomers</b>	Standard: Viton® Optional: Buna N, EPR, and Kalrez®
<b>Case and Covers</b>	304 Stainless steel

Hastelloy® is a registered trademark of Haynes International, Inc. Viton® and Kalrez® are registered trademarks of DuPont Performance Elastomers L.L.C.

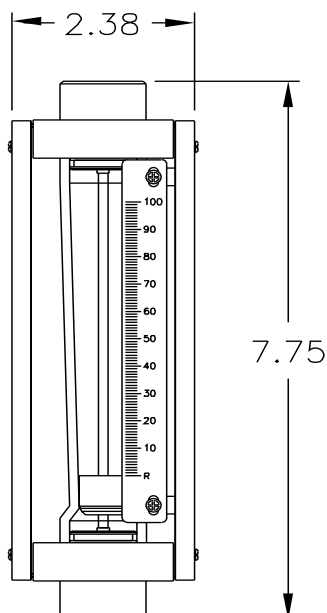
## Performance

<b>Capacities</b>	Water 0.5 to 25 GPM Air 2 to 14 SCFM
<b>Scale</b>	80 mm (3") Direct reading, detachable
<b>Accuracy</b>	±5% of Full Scale Flow
<b>Turndown</b>	10:1 to 12.5:1, unless otherwise indicated
<b>Repeatability</b>	1%
<b>Maximum Temperatures</b>	200°F (93°C) Liquid 250°F (121°C) Gases
<b>Maximum Pressures</b>	200 psig
<b>Ambient Temperature</b>	33°F to 125°F (1°C to 52°C)

## Options

<b>Certified Calibrations</b>	Conform to ISA RP 16.6
<b>Scales</b>	Can be produced in any volumetric unit

# Dimensional Drawing



# Flow Capacities and Dimensions

Order #	Full Scale Flow GPM – Water	Order #	Full Scale Flow SCFM – Air	Float #	Float Type	Press. Drop in WC	Tube Size	Tube #	Connection Size (Inches)
41W	.5	41A	2.0	1/2-LPG-04	LP	---	4G (.50")	1/2-24-G-3	1/2"-FNPT
42W	1.0	42A	4.0	1/2-LPG-05	LP	5	4G (.50")	1/2-24-G-3	1/2"-FNPT
43W	2.0	43A	8.2	1/2-SLG-01	SL	9	4G (.50")	1/2-24-G-3	1/2"-FNPT
44W	3.5	44A	14.0	5/8-SLP-01	SL	9	4P (.625")	5/8-29-P-3	1/2"-FNPT
45W	5.6	---	---	5/8-SLP-02	SL	11	4P (.625")	5/8-29-P-3	1/2"-FNPT
46W	7.4	---	---	5/8-SLP-03	SL	15	4P (.625")	5/8-29-P-3	1/2"-FNPT
61W	10.0	---	---	1-GSP-01	LP	16	6P (1")	1-35-P-3	1"-FNPT
62W	15.0	---	---	1-GSP-02	GS	24	6P (1")	1-35-P-3	1"-FNPT
63W	25.0	---	---	1-SLG-01	SL	42	6P (1")	1-35-P-3	1"-FNPT

## Footnotes:

- Because of the compressible nature of gas, meters used in this service may be subject to float bounce if:
  - The meter is used in very low pressure applications.
  - There is more than two pipe diameters between the meter and a control valve.
  - The gas being metered is a low Specific Gravity.
  - The meter is operating below 20% of full scale flow.
  - Back pressure is insufficient to stabilize the float.
- Tubes with the designation "G" (e.g. 4G) have rib guided floats. Tubes designated "P" (e.g. 6P) have pole guided floats

# Ordering Information

Use the following guide to determine the specific product number you require.

The following example describes a P460 flowmeter with stainless steel fittings, 316 stainless steel float, Viton O-rings, and 0.5 GPM water flow rate.

## Example: P460-1-2-3-41W

Meter Series	Fitting Material	Float Material	O-Ring Material	Order Number
P460	316L SS - 1 PVC - 3*	316L SS - 2 Hastelloy® 276-C - 4	EPR - 1 Buna-N - 2 Viton® - 3 Kalrez® - 4	See Specifications Table

\* Not for Air Service

Hastelloy® is a registered trademark of Haynes International, Inc.  
Viton® and Kalrez® are registered trademarks of DuPont Performance Elastomers L.L.C.

### WARNING – USER RESPONSIBILITY

FAILURE OR IMPROPER SELECTION OR IMPROPER USE OF THE PRODUCTS DESCRIBED HEREIN OR RELATED ITEMS CAN CAUSE DEATH, PERSONAL INJURY AND PROPERTY DAMAGE.

This document and other information from Parker-Hannifin Corporation, its subsidiaries and authorized distributors provide product or system options for further investigation by users having technical expertise.

The user, through its own analysis and testing, is solely responsible for making the final selection of the system and components and assuring that all performance, endurance, maintenance, safety and warning requirements of the application are met. The user must analyze all aspects of the application, follow applicable industry standards, and follow the information concerning the product in the current product catalog and in any other materials provided from Parker or its subsidiaries or authorized distributors.

To the extent that Parker or its subsidiaries or authorized distributors provide component or system options based upon data or specifications provided by the user, the user is responsible for determining that such data and specifications are suitable and sufficient for all applications and reasonably foreseeable uses of the components or systems.

### Offer of Sale

The items described in this document are hereby offered for sale by Parker-Hannifin Corporation, its subsidiaries or its authorized distributors. This offer and its acceptance are governed by the provisions stated in the detailed "Offer of Sale" elsewhere in this document or available at [www.parker.com/offersale](http://www.parker.com/offersale)

# P480 Series

## Glass Tube Variable Area Flowmeter



The P480 Series Flowmeters are characterized by its high reliability and wide flow range capability, making it suitable for measurement of liquids and gases in a wide variety of applications.

With multiple mounting options and connection types the P480 easily mounts into any system.



### Contact Information:

Parker Hannifin Corporation  
**Porter Instrument Division**  
245 Township Line Road  
Hatfield PA, 19440

**Phone 215 723 4000**  
**Fax 215 723 2199**  
**industrial@parker.com**

[www.porterinstrument.com](http://www.porterinstrument.com)

### Product Features:

- Borosilicate Glass tube
- 304 Stainless Steel Case
- Scales can be produced in any volumetric unit.
- Highly accurate,  $\pm 2\%$  of Full Scale Flow
- 250 mm (10") detachable scales

# Specification

## Materials

<b>Metering Tube</b>	Borosilicate Glass
<b>Internal Components</b>	Standard: 316L Stainless Steel Optional: Hastelloy® C-276
<b>Inlet/Outlet Fittings</b>	FNPT or Flange, Vertical or Horizontal
<b>Fitting Material</b>	Standard: 316L Stainless Steel Optional: PVC (vertical connections only)
<b>Elastomers</b>	Standard: Viton® Optional: Buna N, EPR, and Kalrez®
<b>Case</b>	304 Stainless Steel
<b>Cover</b>	Molded Polycarbonate Shield

Hastelloy® is a registered trademark of Haynes International, Inc.  
Viton® and Kalrez® are registered trademarks of DuPont Performance Elastomers L.L.C.

## Options

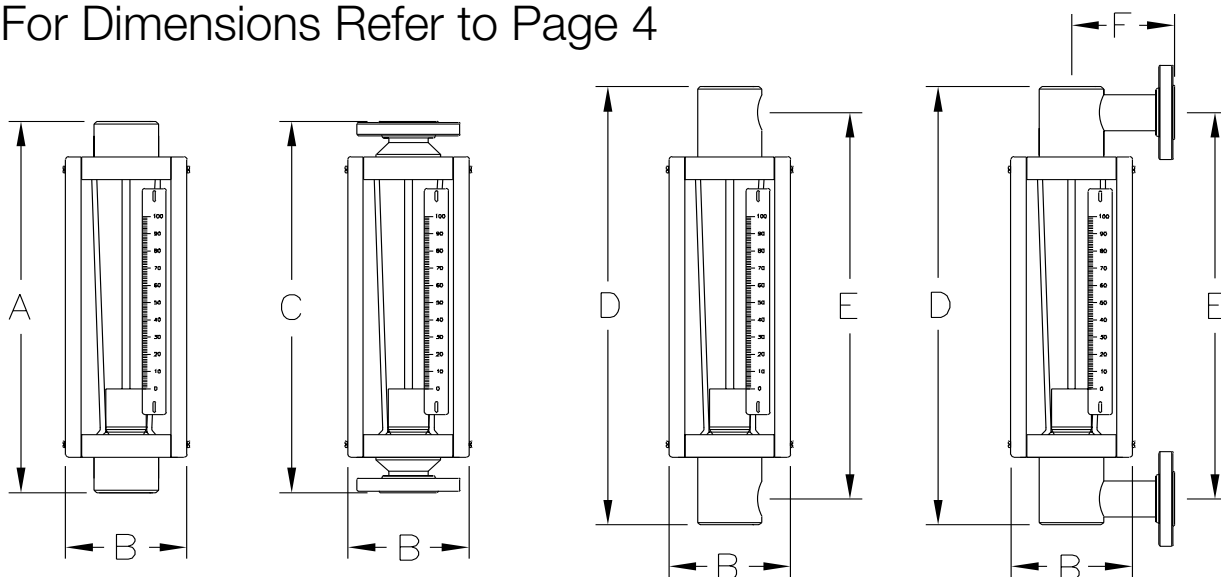
<b>Alarm</b>	Latching Reed Switch
<b>Certified Calibrations</b>	Conform to ISA RP 16.6
<b>Scales</b>	Can be produced in any volumetric unit

## Performance

<b>Capacities</b>	Water 0.22 to 132 GPM Air .9 to 350 SCFM
<b>Scale</b>	250 mm (10") Direct reading, detachable
<b>Accuracy</b>	±2% of Full Scale Flow
<b>Turndown</b>	10:1 to 12.5:1, unless otherwise indicated
<b>Repeatability</b>	1/2%
<b>Maximum Temperatures</b>	316L SS Fittings- 200°F (93°C) PVC Fittings- 110°F (43°C)
<b>Maximum Pressures</b>	316L SS Fittings- 300 psig, size 3 & 4 316L SS Fittings- 250 psig, size 5 & 6 316L SS Fittings- 150 psig, size 8 & 9 PVC Fittings- 150 psig, size 3, 4, 5 & 6 PVC Fittings- 125 psig, size 8 & 9
<b>Ambient Temperature</b>	33°F to 125°F (1°C to 52°C)

# Dimensional Drawing

For Dimensions Refer to Page 4



# Flow Capacities and Dimensions

Order #	Full Scale Flow GPM - Water	Alarm Options	Order Number	Full Scale Flow SCFM- Air	Alarms Options	Float Number	Float Type	Press Drop In W.C	Tube Size-Number	Dimensions (Inches)						Connection Size (Inches)	
										A	B	C	D	E	F	FNPT	Flange
31W	.22	No	31A	.9	No	3/8-LPG-01	LP	—	3G - 3/8-20-G-10	19.69	4.22	19.69	19.13	17.5	3.5	3/4"	1/2"
32W	.315	No	32A	1.4	No	3/8-SLG-01	SL	2	3G - 3/8-20-G-10	19.69	4.22	19.69	19.13	17.5	3.5	3/4"	1/2"
33W	.64	No	33A	2.7	No	3/8-SLG-02	SL	7	3G - 3/8-20-G-10	19.69	4.22	19.69	19.13	17.5	3.5	3/4"	1/2"
41W	.77	No	41A	3.4	No	1/2-LPG-01	LP	6	4G - 1/2-32-G-10	19.69	4.22	19.69	19.13	17.5	3.5	3/4"	1/2"
42W	1.02	No	42A	4.4	No	1/2-LPG-02	LP	10	4G - 1/2-32-G-10	19.69	4.22	19.69	19.13	17.5	3.5	3/4"	1/2"
43W	1.20	Yes	43A	5.0	Yes	1/2-GVG-01	GV	10	4G - 1/2-32-G-10	19.69	4.22	19.69	19.13	17.5	3.5	3/4"	1/2"
44W	1.44	No	44A	6.1	No	1/2-GSG-01	GS	15	4G - 1/2-32-G-10	19.69	4.22	19.69	19.13	17.5	3.5	3/4"	1/2"
45W	1.92	Yes	45A	8.5	Yes	1/2-SLG-01	SL	28	4G - 1/2-32-G-10	19.69	4.22	19.69	19.13	17.5	3.5	3/4"	1/2"
46W	2.26	Yes	46A	10.2	Yes	1/2-SLG-02	SL	41	4G - 1/2-32-G-10	19.69	4.22	19.69	19.13	17.5	3.5	3/4"	1/2"
51W	1.1	No	51A	4.5	No	3/4-LPG-01	SL	1	5G - 3/4-28-G-10	19.69	4.22	19.69	19.13	17.5	4	3/4"	1"
52W	2.4	Yes	52A	10.0	Yes	3/4-GVG-01	SL	4	5G - 3/4-28-G-10	19.69	4.22	19.69	19.13	17.5	4	3/4"	1"
53W	3.0	Yes	53A	12.0	Yes	3/4-GSG-01	SL	5	5G - 3/4-28-G-10	19.69	4.22	19.69	19.13	17.5	4	3/4"	1"
54W	3.3	Yes	54A	13.2	Yes	3/4-GVG-02	SL	6	5G - 3/4-28-G-10	19.69	4.22	19.69	19.13	17.5	4	3/4"	1"
55W	4.0	Yes	55A	16.4	Yes	3/4-GSG-02	SL	6	5G - 3/4-28-G-10	19.69	4.22	19.69	19.13	17.5	4	3/4"	1"
56W	5.2	Yes	56A	22.0	Yes	3/4-SLG-01	SL	18	5G - 3/4-28-G-10	19.69	4.22	19.69	19.13	17.5	4	3/4"	1"
61W	6.9	Yes	---	---	No	1-LPG-02	LP	4	6G - 1-32-G-10	19.69	4.22	19.69	19.13	17.5	4	3/4"	1"
62W	9.8	Yes	---	---	No	1-SLG-01	SL	8	6G - 1-32-G-10	19.69	4.22	19.69	19.13	17.5	4	3/4"	1"
63W	12.6	Yes	---	---	No	1-SLG-02	SL	13	6G - 1-32-G-10	19.69	4.22	19.69	19.13	17.5	4	3/4"	1"
64W	6.7	No	64A	27.0	No	1-LPP-01	LP	4	6P - 1-40-P-10	19.69	4.22	19.69	19.13	17.5	4	3/4"	1"
65W	7.4	No	65A	30.0	No	1-GVP-01	GV	6	6P - 1-40-P-10	19.69	4.22	19.69	19.13	17.5	4	3/4"	1"
66W	8.5	No	66A	35.0	No	1-GVP-02	GV	8	6P - 1-40-P-10	19.69	4.22	19.69	19.13	17.5	4	3/4"	1"
67W	10.4	No	67A	42.5	No	1-GSP-01	GS	10	6P - 1-40-P-10	19.69	4.22	19.69	19.13	17.5	4	3/4"	1"
68W	11.6	No	68A	46.5	No	1-GVP-03	GV	15	6P - 1-40-P-10	19.69	4.22	19.69	19.13	17.5	4	3/4"	1"
69W	12.0	No	69A	50.0	No	1-GSP-02	GS	14	6P - 1-40-P-10	19.69	4.22	19.69	19.13	17.5	4	3/4"	1"
610W	15.6	No	610A	63.0	No	1-GSP-03	GS	24	6P - 1-40-P-10	19.69	4.22	19.69	19.13	17.5	4	3/4"	1"
611W	21.6	Yes	611A	100.0	Yes	1-SLP-01	SL	61	6P - 1-40-P-10	19.69	4.22	19.69	19.13	17.5	4	3/4"	1"
612W	27.5	Yes	---	---	No	1-SLP-02	SL	85	6P - 1-40-P-10	19.69	4.22	19.69	19.13	17.5	4	3/4"	1"
613W	34.5	Yes	---	---	No	1-SLP-03	SL	110	6P - 1-40-P-10	19.69	4.22	19.69	19.13	17.5	4	3/4"	1"
84W	17.0	No	84A	70.0	No	11/2-GVP-01	LP	2	8P - 11/2-32-P-10	19.69	5.90	19.69	23.26	20.5	5	1 1/2"	1 1/2"
85W	21.2	No	85A	87.0	No	11/2-GVP-02	LP	4	8P - 11/2-32-P-10	19.69	5.90	19.69	23.26	20.5	5	1 1/2"	1 1/2"
86W	22.2	No	---	---	No	11/2-GSP-01	LP	6	8P - 11/2-32-P-10	19.69	5.90	19.69	23.26	20.5	5	1 1/2"	1 1/2"
87W	24.8	No	87A	102.0	No	11/2-GVP-01	GV	10	8P - 11/2-32-P-10	19.69	5.90	19.69	23.26	20.5	5	1 1/2"	1 1/2"
88W	28.5	No	---	---	No	11/2-GSP-02	GV	20	8P - 11/2-32-P-10	19.69	5.90	19.69	23.26	20.5	5	1 1/2"	1 1/2"
89W	35.0	No	---	---	No	11/2-GSP-03	GS	24	8P - 11/2-32-P-10	19.69	5.90	19.69	23.26	20.5	5	1 1/2"	1 1/2"
94W	41.5	No	94A	170.0	No	2-LPG-01	LP	2	9P - 2-30-P-10	19.69	5.90	19.69	23.26	20.5	5	1 1/2"	1 1/2"
95W	58.0	No	95A	240.0	No	2-LPG-02	LP	6	9P - 2-30-P-10	19.69	5.90	19.69	23.26	20.5	5	1 1/2"	1 1/2"
96W	65.0	No	96A	270.0	No	2-LPG-03	LP	10	9P - 2-30-P-10	19.69	5.90	19.69	23.26	20.5	5	1 1/2"	1 1/2"
97W	85.0	No	97A	350.0	No	2-SLP-00	SL	40	9P - 2-30-P-10	19.69	5.90	19.69	23.26	20.5	5	1 1/2"	1 1/2"
98W	100.0	No	---	---	No	2-SLP-01	SL	50	9P - 2-30-P-10	19.69	5.90	19.69	23.26	20.5	5	1 1/2"	1 1/2"
99W	132.0	No	---	---	No	2-SLP-02	SL	60	9P - 2-30-P-10	19.69	5.90	19.69	23.26	20.5	5	1 1/2"	1 1/2"

# Ordering Information

Use the following guide to determine the specific product number you require.

The following example describes a P480 flowmeter with stainless steel vertical FNPT fittings, 316 stainless steel float, Viton O-rings, 0.22 GPM water flow rate and alarm output.

**Example: P480-1-2-3-31W-1**

Meter Series	Fitting Type/Material	Float Material	O-Ring Material	Order Number	Alarm Option
P480	Vertical FNPT- 316L SS - 1 Horizontal FNPT- 316L SS - 2 Vertical Flange- 150# - 3 Vertical Flange- 300# - 4 Horizontal Flange- 150# - 5 Horizontal Flange- 300# - 6 Vertical FNPT-PVC - 7 *	316LSS - 2 Hastelloy® C-276 - 4	EPR -1 Buna-N - 2 Viton® - 3 Kalrez® - 4	See Specifications Table	Check Specifications Table for Availability Without Alarm - 0 With Alarm - 1

\*Only use this box with order numbers 610W thru 613W. Otherwise leave blank

\*Not for air service

Hastelloy® is a registered trademark of Haynes International, Inc.  
Viton® and Kalrez® are registered trademarks of DuPont Performance Elastomers L.L.C.

## WARNING – USER RESPONSIBILITY

FAILURE OR IMPROPER SELECTION OR IMPROPER USE OF THE PRODUCTS DESCRIBED HEREIN OR RELATED ITEMS CAN CAUSE DEATH, PERSONAL INJURY AND PROPERTY DAMAGE.

This document and other information from Parker-Hannifin Corporation, its subsidiaries and authorized distributors provide product or system options for further investigation by users having technical expertise.

The user, through its own analysis and testing, is solely responsible for making the final selection of the system and components and assuring that all performance, endurance, maintenance, safety and warning requirements of the application are met. The user must analyze all aspects of the application, follow applicable industry standards, and follow the information concerning the product in the current product catalog and in any other materials provided from Parker or its subsidiaries or authorized distributors.

To the extent that Parker or its subsidiaries or authorized distributors provide component or system options based upon data or specifications provided by the user, the user is responsible for determining that such data and specifications are suitable and sufficient for all applications and reasonably foreseeable uses of the components or systems.

## Offer of Sale

The items described in this document are hereby offered for sale by Parker-Hannifin Corporation, its subsidiaries or its authorized distributors. This offer and its acceptance are governed by the provisions stated in the detailed "Offer of Sale" elsewhere in this document or available at [www.parker.com/offerofsale](http://www.parker.com/offerofsale)